



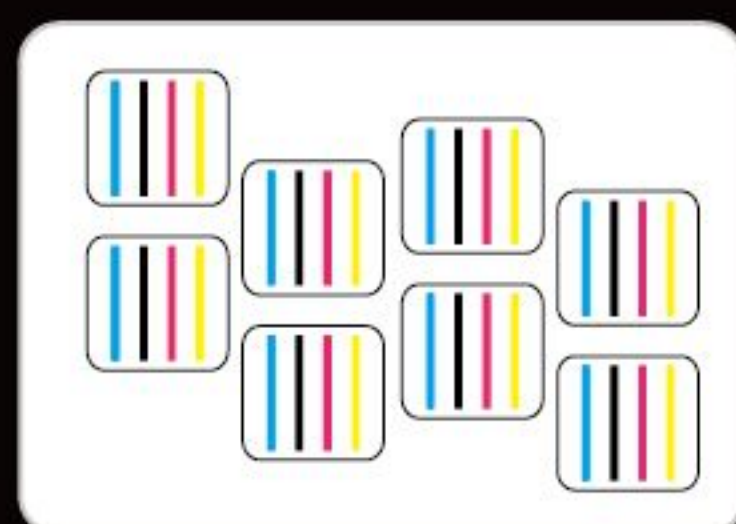
## GD2008/2208-TX High Speed Digital Industrial Printer



(Heavy Body/ Black KingKong / High Productivity)

### 8 Head Configuration

Advanced electrical board system. Standard eight Epson I3200 print It adopts advanced board control technology. It is equipped with 8 i3200 print heads, 3200 nozzles per head with 3.5pl ink droplets, and the printing resolution is up to 3600dpi. Industrial design ensures the durability of the print head.



GD2008TX offers a new automatic production solution with high strength and rigid structure, can deal with 3000m sublimation paper loading and take-up. Unattended workflow with productivity is now coming true.

- With double guide rails and upgraded motor, the carriage runs more smoothly.
- Stronger machine body made by thicker metal boards
- Fully sealed heating system and silent suction fan reduces noise
- Constant temperature heating system protects print heads from drying or losing nozzles
- Multi-point self-adaptive pinch roller controls the media pressure more accurately to reach continuous and stable printing

### Parameters



Variable frequency motor



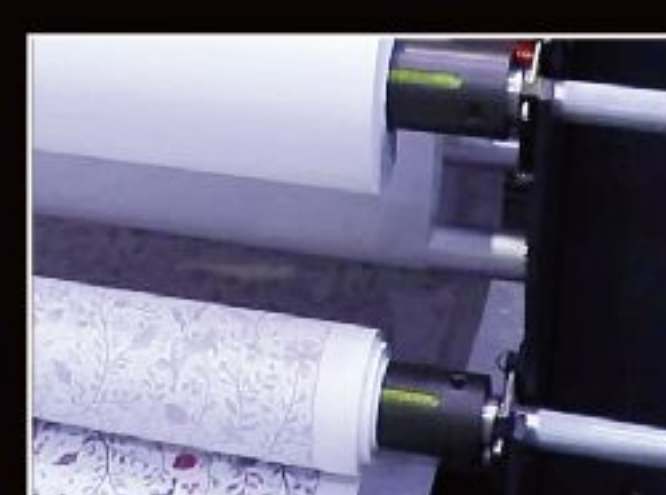
220ml secondary ink cartridge + 5L bulk ink system ensures amazing printing speed



Wider and thicker girder with THK silent double guide rails



High quality DC servo motor, good stability and long service life



The air shaft media system supports 3000m media roll



Front + bottom infrared drying system



The anti-collision device protects print heads while working



Capping and integrated wiper to moisturize heads, make it convenient for operation and maintenance





Widely used on: clothing, home fabrics, sampling, T-shirts, canvas bags, cushions, scooters, flags, textile fabrics, etc

SPECIFICATIONS (1.8m/2m/2.2m optional)

Model		GD2008-TX
Print Head		Eight I3200 Print Heads
Printing Technology		Piezoelectric Inkjet
Acceptable Media	Width	210-2030(mm)
	Thickness	≥30g
	Outer Diameter	210 mm(8.3in)
	Bearing Meter	3000m
Ink Cartridges	Type	220ml secondary ink tank + 5L ink bottle
	Color	CMYK
Printing Resolution		Maximum 3600 dpi
Printing Speed		1pass: 3444 sqft (320sqm/h)
		2pass: 1938 sqft (180 sqm/h)
		3pass: 1076 sqft (100 sqm/h)
Ink curing		External automatic control air heat integrated dryer, temperature range 30-50 degrees C
Interface		USB 3.0
Power Supply		AC 220V ± 5%,16A, 50HZ±1
Power Consumption		7200 W
Dimensions(with stand)		141(W)x47(D)x79(H) in. ( 3570(W)x1200(D)x2000(H) mm )
Weight(with stand)		700 kg
Environment	Power on	Temperature: 59 ℉ to 90 ℉ [15℃ to 32℃] (68 ℉ [20℃] / Humidity: 35 to 80% (no condensation)
	Power off	Temperature: 41 ℉ to 104 ℉ [5℃ to 40℃] / Humidity: 20 to 80% (no condensation)
Accessories		External automatic control air and heat integrated dryer, low-ink alarm system, double air-shaft media loading and ta-up system, automatic moisturizing cleaning system

GD2008-TX

1pass	320 m²/h
2pass	180 m²/h
3pass	100 m²/h

SHANGHAI GRANDO DIGITAL TECHNOLOGY CO.,LTD

Address: A1 Block,No.3802,Shengang Road,Songjiang District,Shanghai,China  
Tel: +86 025-84720661 / 84720665 / Website: www.grando-dg.com