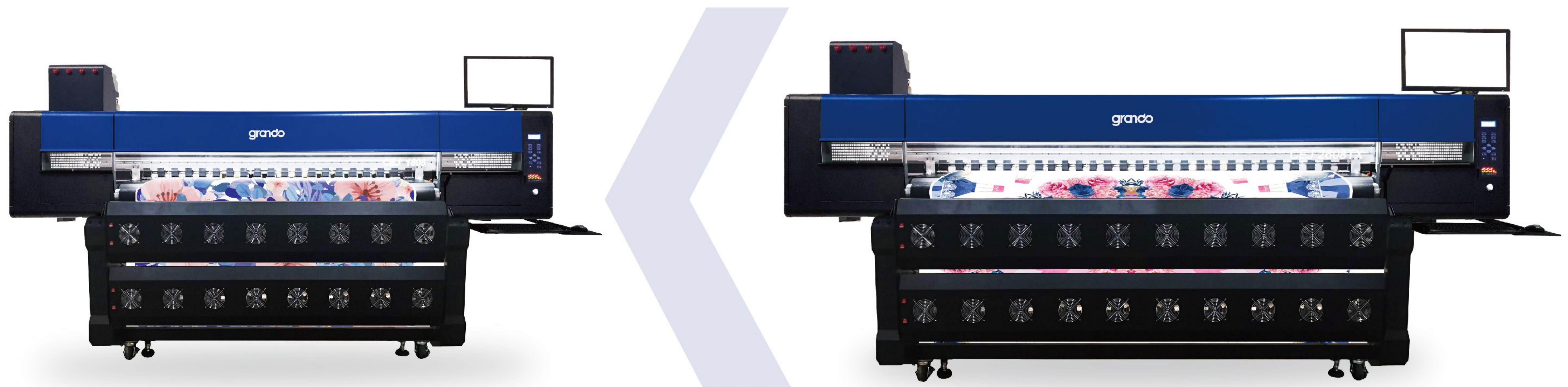


# GD1808-TX / GD2608-TX

Industrial Dye Sublimation Printer (With 8 Heads)



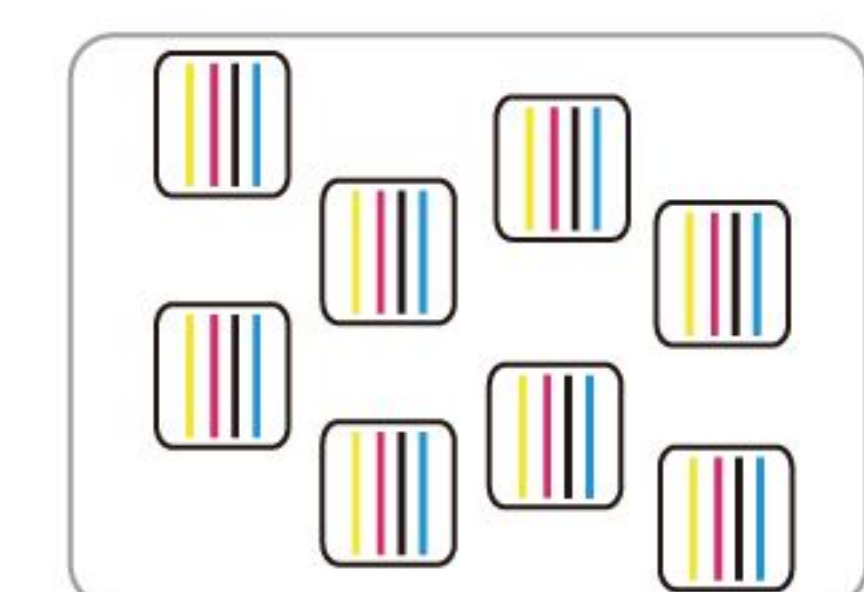
Grando Sublimation Ink



\* 1.8m Eight I3200 Print Heads Speed

360x1200dpi - 1pass	320 m <sup>2</sup> /h
360x2400dpi - 2pass	180 m <sup>2</sup> /h
360x3600dpi - 3pass	120 m <sup>2</sup> /h

Eight I3200 Heads  
CMYK





Both the sublimation and direct-to-textile printers are examples of our expertise and engineering: top performance, reliable and precise. With Grando series printer, you can maximize production while controlling quality and minimizing costs for beautiful soft signage, apparel and interior decor items that will set your business apart from the competition. Wide applications in clothing, home decoration fabrics, sampling, shirt, canvas bags, bolster, scooter, flags, textile gadgets etc.



## ● Technical Specifications

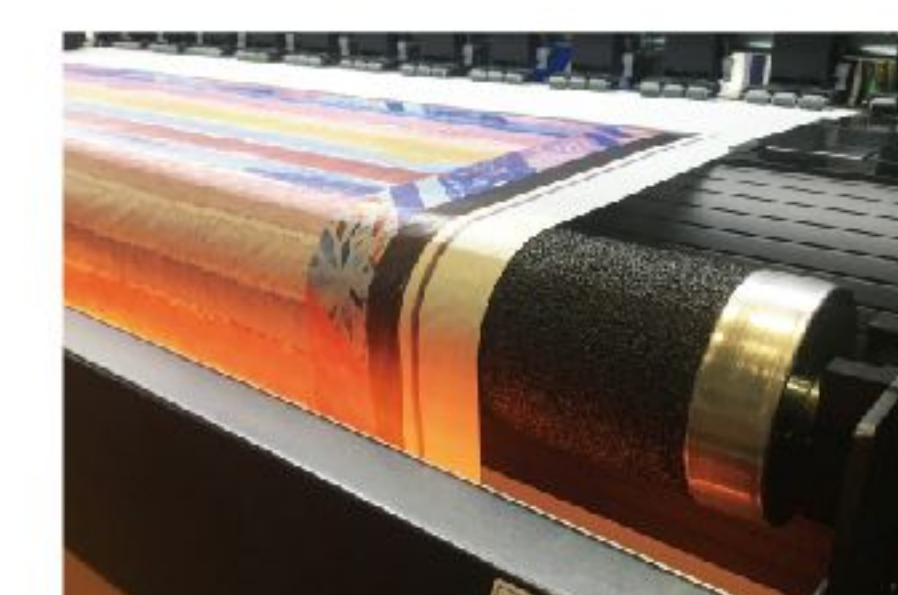
Model	GD1808-TX(I13200)	GD2608-TX(I13200)
Print Head	Eight I3200 Print Heads	
Printing Technology	Piezoelectric Inkjet	
Acceptable Media	Width	71.6 in.(1820 mm) / 103.5 in.(2630 mm)
	Thickness	Maximum 39 mil(1 mm) / Maximum 39 mil(1 mm)
	Weight	220 lb.(100 kg) / 220 lb.(100 kg)
Printing Width	70.8 in.(1800 mm)	102 in.(2600 mm)
Ink Cartridges	Type	Dye Sublimation Ink
	Capacity	4*4 CISS (220ml ink cartridge with 5L ink tank)
	Color	4 colors (Cyan, Magenta, Yellow, Black)
Printing Resolution	Maximum 3600 dpi	
Printing Speed	1pass(360x1200dpi): 320 sqm/h	1pass(360x1200dpi): 4010 sqft (373 sqm/h)
	2pass(360x2400dpi): 180 sqm/h	2pass(360x2400dpi): 2301 sqft (214 sqm/h)
	3pass(360x3600dpi): 120 sqm/h	3pass(360x3600dpi): 1538 sqft (143 sqm/h)
Media Heating System	Intergrated post heater & Infrared Dryer & Fan system	
Interface	USB 3.0	
Power Supply	AC 220V ± 10%, 50/60 HZ	
Dimensions(with stand)	133.86(W)x51.18(D)x74.80(H) in.	165(W)x43(D)x63(H) in.
	(3400(W)x1300(D)x1900(H) mm )	( 4200(W)x1100(D)x1589(H) mm )
Weight(with stand)	1212.54 lb. (550 kg)	1654 lb. (750 kg)
Package Dimensions	133.86(W)x55.12(D)x78.74(H) in.	169(W)x47(D)x67(H) in.
	(3600(W)x1400(D)x2000(H) mm )	( 4300(W)x1200(D)x1689(H) mm )
Package Weight	1455.05 lb. (660 kg)	1764 lb. (800 kg)
Environment	Power on	Temperature: 59 ℉ to 90 ℉ [15℃ to 32℃] / Humidity: 35 to 80% (no condensation)
	Power off	Temperature: 41 ℉ to 104 ℉ [5℃ to 40℃] / Humidity: 20 to 80% (no condensation)
Accessories	USB cable, media clamp, manual, drain bottle, ink cartridges, RIP software, etc.	



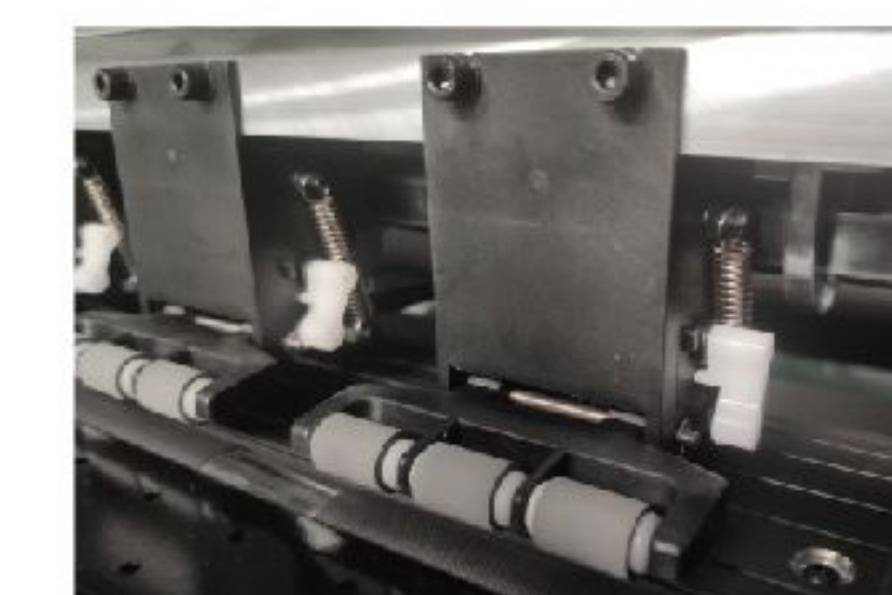
Double high-precision mute rail



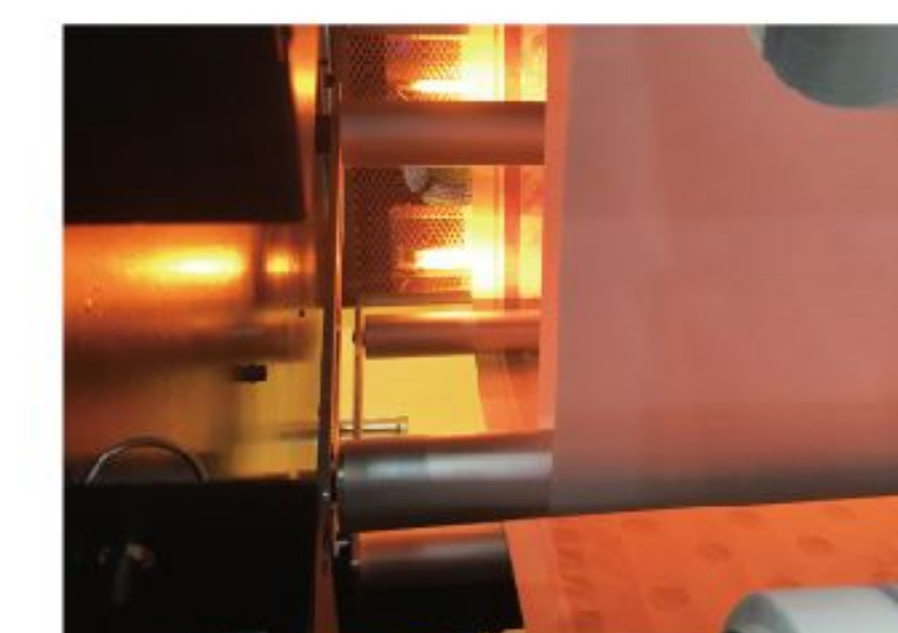
5L bulk ink system with reminder for refilling



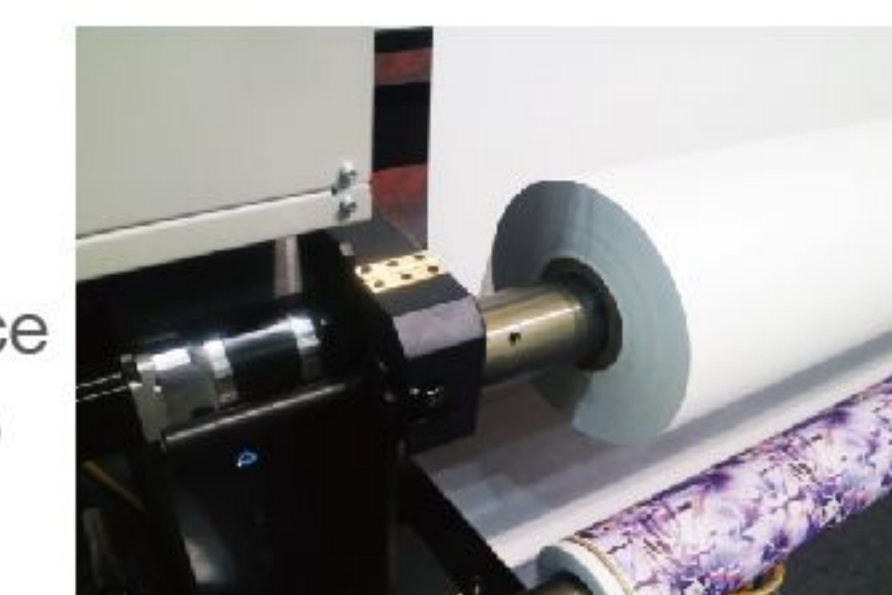
Front expander



Separate control switch for each pinch roller



Dancing bar ensures media tension balance and accurate take-up



Air shaft feeding and take up system,Support 1000m heavy paper loading



Integrated IR & cooling fan system



Inverter motor ensures smooth rolling media with neat edges