

GD1803-S / GD3203-S

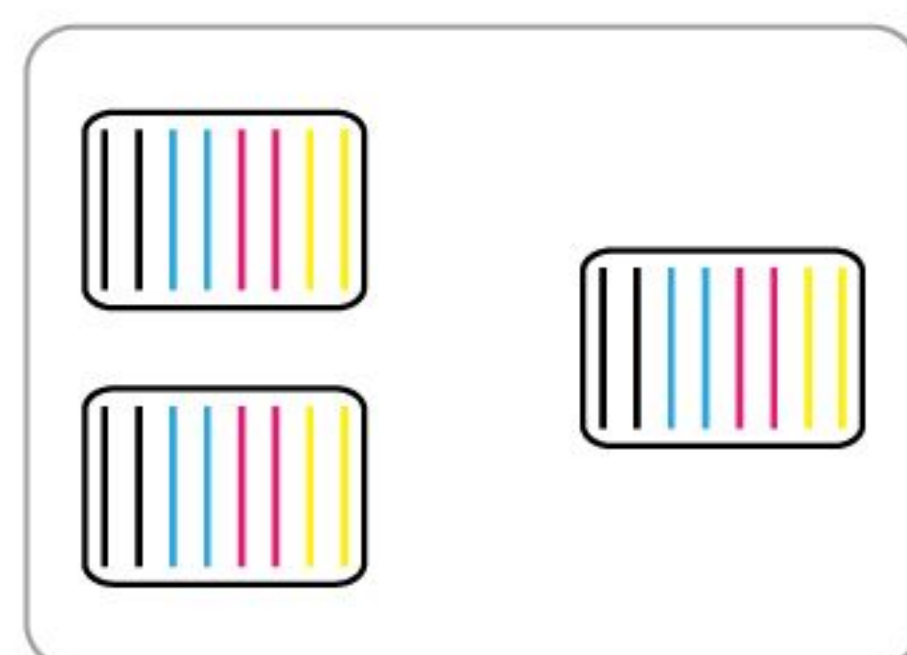
Eco Solvent Printer (With 3 Heads)



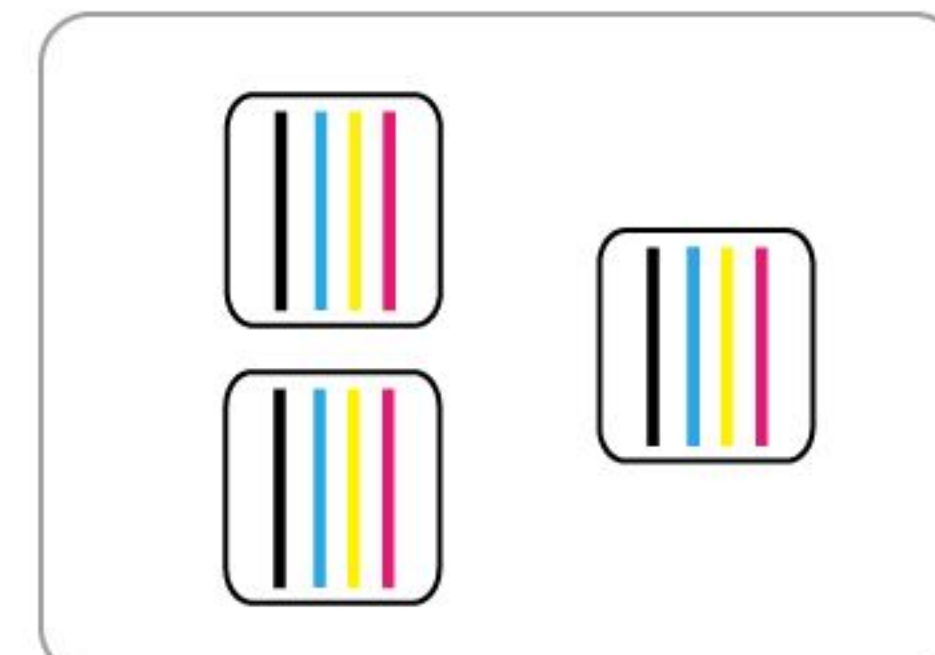
Grando Eco Solvent Ink



Three DX5 Heads



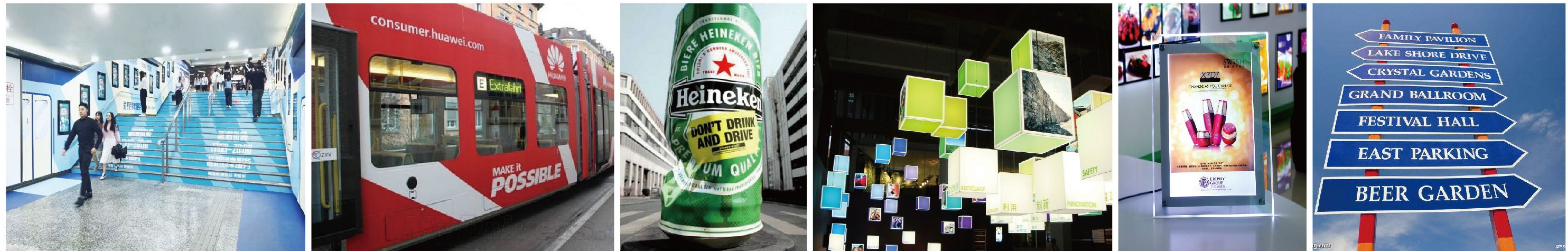
Three I3200 Heads



* 1.8m Three I3200 Print Heads Speed

360x1800dpi - 3pass	70 m ² /h
720x1200dpi - 4pass	53 m ² /h
720x1800dpi - 6pass	36 m ² /h

Our range of wide format inkjet printers matches our knack for engineering and quality with your desire for impeccable performance and careless production. You can produce roll-to-roll indoor prints and long term outdoor signs. Wide applications in light box posters, customized car stickers, background wall cloth, label printing, advertising sign, subway advertising, shopping mall advertising signs etc.



● Technical Specifications

Model	GD1803-S(DX5)	GD1803-TX(4720)	GD3203-S(DX5)	GD3203-TX(I3200)
Print Head	Three DX5 Print Heads	Three I3200 Print Heads	Three DX5 Print Heads	Three I3200 Print Heads
Printing Technology	Piezoelectric Inkjet			
Acceptable Media	Width	71.6 in.(1820 mm)		128 in.(3250 mm)
	Thickness	Maximum 59 mil(1.5 mm)		Maximum 59 mil(1.5 mm)
Printing Width	Weight	132.2 lb.(60 kg)		220 lb.(100 kg)
		70.8 in.(1800 mm)		126 in.(3200 mm)
Ink Cartridges	Type	Eco Solvent Ink		
	Capacity	4*4 CISS (220ml ink cartridge with 1.5L ink tank) 6*6 CISS (6 color), 8*8 CISS (8 color) optional		
	Color	4 colors (Cyan, Magenta, Yellow, Black) 6 colors, 8 colors optional		
Printing Resolution	Maximum 1440 dpi	Maximum 2400 dpi	Maximum 1440 dpi	Maximum 2400 dpi
Printing Speed	4pass(720x720dpi): 461 sqft (43 sqm/h)		3pass(360x1800dpi): 1021 sqft (95 sqm/h)	4pass(720x720dpi): 537 sqft (50 sqm/h) 3pass(360x1800dpi): 1075 sqft (100 sqm/h)
	6pass(720x1080dpi): 322 sqft (30 sqm/h)		4pass(720x1200dpi): 796 sqft (74 sqm/h)	6pass(720x1080dpi): 418 sqft (39 sqm/h) 4pass(720x1200dpi): 903 sqft (84 sqm/h)
	8pass(720x1440dpi): 247 sqft (23 sqm/h)		6pass(720x1800dpi): 538 sqft (50 sqm/h)	8pass(720x1440dpi): 290 sqft (27 sqm/h) 6pass(720x1800dpi): 624 sqft (58 sqm/h)
Media Heating System	Intergrated post heater & Infrared Dryer & Fan system			
Interface	USB 2.0	USB 3.0/LAN	USB 2.0	USB 3.0/LAN
Power Supply	AC 220V ± 10%, 50/60 HZ			
Dimensions(with stand)	126(W)x26(D)x53(H) in.		180(W)x38(D)x62(H) in.	
	(3190(W)x650(D)x1360(H) mm)		(4580(W)x970(D)x1580(H) mm)	
Weight(with stand)	882 lb. (400 kg)		2204 lb. (1000 kg)	
Package Dimensions	Entirety Packing : 3360(W)x950(D)x1560(H) mm		195(W)x44(D)x71(H) in.	
	Split Packing : 3350(W)x820(D)x1030(H) mm		(4940(W)x1130(D)x1810(H) mm)	
Package Weight	Entirety Packing : 1102.5 lb. (500 kg)	Split Packing : 1058.4 lb. (480 kg)	2535 lb. (1150 kg)	
Environment	Power on	Temperature: 59 ℉ to 90 ℉ [15 ℃ to 32 ℃] (68 ℉ [20 ℃] / Humidity: 35 to 80% (no condensation)		
	Power off	Temperature: 41 ℉ to 104 ℉ [5 ℃ to 40 ℃] / Humidity: 20 to 80% (no condensation)		
Accessories	USB cable, media clamp, manual, drain bottle, ink cartridges, RIP software, etc.			



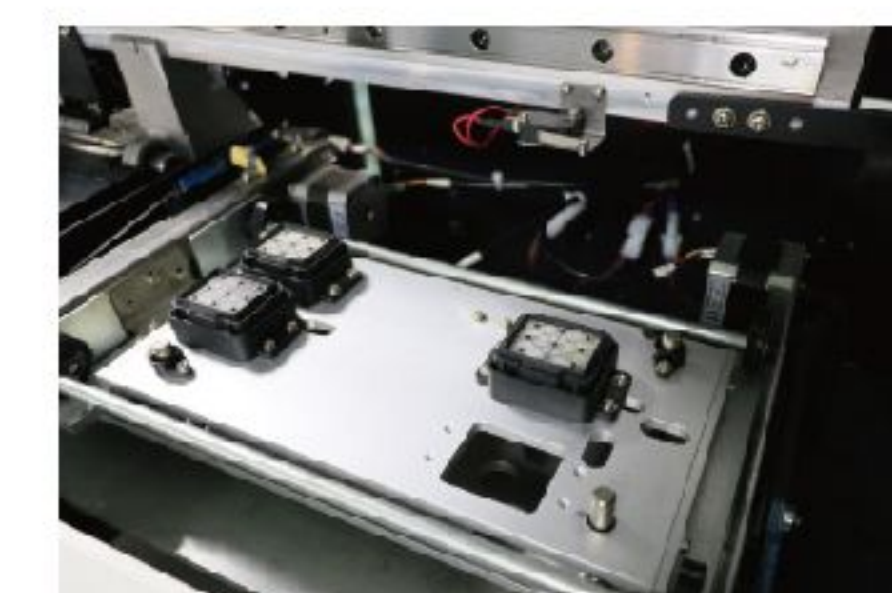
THK high-precision mute rail.



High-precision and high-stability tensioning pulley system.



The automatic cleaning assembly adds a single-way valve to increase the stability of the ink supply.



Automatic moisturizing cleaning assembly ensures the stability of head cleaning and improves working stability.



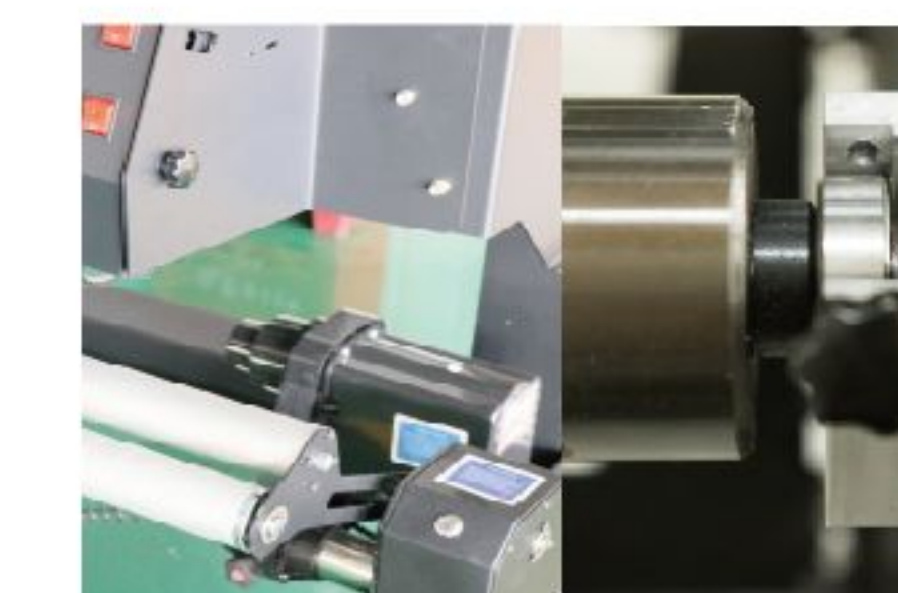
Bulky ink bottle with lack of ink alarm system represents the advanced concept of industrial application



High quality DC servo motor with good stability and long life.



Three stage heating system including pre-heater, print heater, and rear heater and platform vacuum system with adjustable power.



1.8m with tension take up system,intelligent rolling system.3.2m with Inflatable take up and feed media shaft .