

GD-1816EP (EPSON i3200*16)

Digital Textile Pigment Printing Machine

grando 根道



C M Y K
C M Y K R G B Or
CMYK / CMYKRGBOr

* 16" i3200-A1 Print Heads Speed

CMYK-720x1200dpi - 4pass	160 sqm/h
CMYKRGBOr-720x1200dpi - 4pass	90 sqm/h



>> Technical Characteristics

Cost-effective industrial rack, industrial production capacity

High efficiency, low cost, high precision to create excellent printing quality, ultra-high cost to meet the fast one-click printing and high-end design customization needs.

HD printing, imaging details are clear.

High speed and stability, one key design customization Using linear motor + magnetic grid + magnetic levitation, greatly improve the stability of printing to ensure high-quality continuous output, through special combination and control system to maximize the productivity of the nozzle, so that you can face mass orders can also be handy.

Intelligent design, easy to understand operation

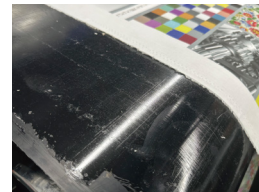
Automatic print head cleaning system, moisturizing system, automatic belt cleaning and maintenance system design, simple operation and maintenance, protect the efficiency of the machine, make it possible for one person to operate the machine.

Detail creation, perfect printing experience.

The operation is simple, the cloth surface flattening effect is good, modular design, the maintenance of each component is convenient and brief, the ink replacement is quick and convenient, the degree of automation is high, the print head is cleaned by one key and moisturized by one key.

Technical Specifications

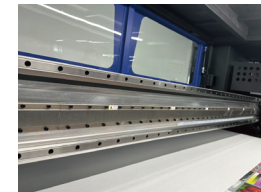
MODEL	GD-1816EP
NAME	Digital Textile Pigment Printing Machine
PRINT HEAD	Epson I3200-A1
HEAD NUMBER	16
MAXIMUM PRINT WIDTH (mm)	1800
MAXIMUM DIAMETER RANGE (mm)	300
MAXIMUM WEIGHT RANGE (Kg)	100
PRINTING SPEED (m ² /h) (paint)	CMYK:720X1200-4pass:160sqm/h CMYKRGBOr:720X1200-4pass:90sqm/h
INK TYPE	Paint, dispersion, high temperature dispersion
INK COLOR	CMYK / C、M、Y、K、R、G、B、Or
PRINTING MEDIUM	Cotton
SUPPORT FOR IMAGE TYPES	JPG/TIFF/BMP/Other
RIP SOFTWARE	NeoStampa
MACHINE SIZE	3680*2200*1720
POWER(Kw)	Printer: 8Kw; Dryer: 20Kw
WORKING TEMPRETURE	20~30
WORKING HUMIDITY	45%-70%(no condensation)
DRYER OPTION	Electric heating



High-density, high-precision fabric media belt systems & gluing platform, better fit the fabric, accurate fabric stepping



Ink negative pressure system, better ink fluency, ensuring stable output for high-speed production



Double THK guide + linear motor, more stable printing, better speed improvement, higher precision output



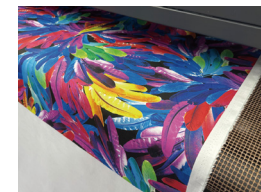
The special feeding system for fabrics can adapt to cotton fabrics of different thicknesses



The guide belt is equipped with water-based function to ensure that the fabric is clean and also can adapt to more ink application solutions



Equipped with a belt-guided sponge brush, it can be cleaned while printing to ensure that the fabric is clean and tidy during the printing process



Pre-drying device to ensure the stability and effectiveness of the fabric



LCD monitoring screen, to detect the stability of the ink system and stepping system at any time, easy to operate and adjust