

CEJ1806-TX

Industrial Dye Sublimation Printer (With 6 Heads)



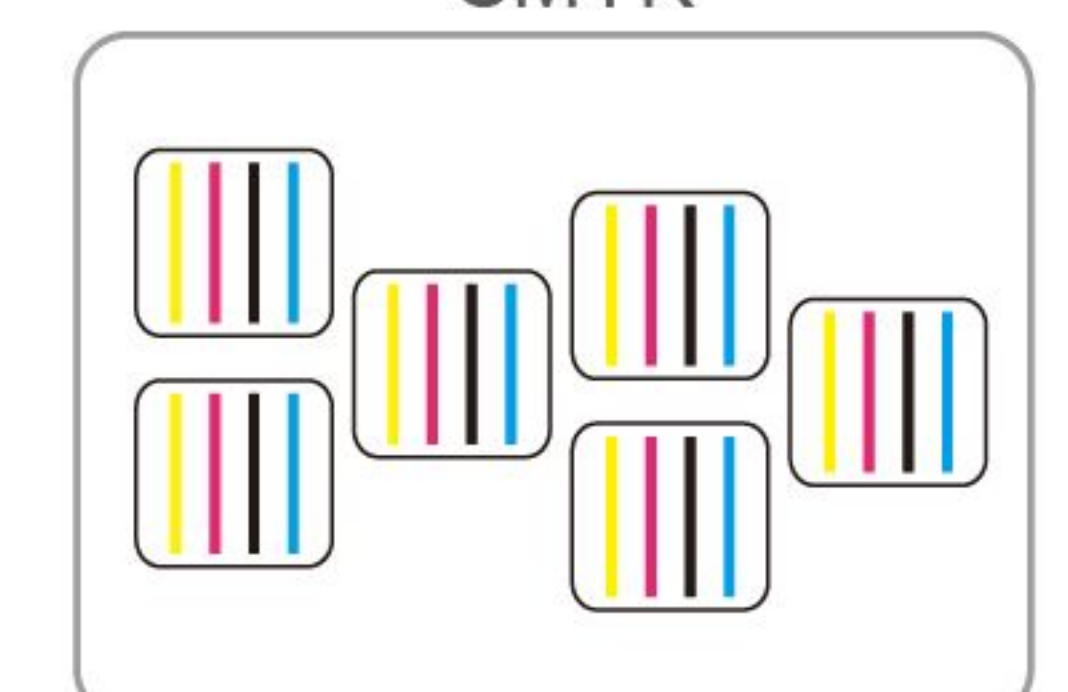
Grando Sublimation Ink



* 1.8m Six I3200 Print Heads Speed

360x1200dpi - 1pass	240 m ² /h
360x2400dpi - 2pass	130 m ² /h
360x3600dpi - 3pass	90 m ² /h

Six I3200 Heads
CMYK



Both the sublimation and direct-to-textile printers are examples of our expertise and engineering: top performant, reliable and precise. With Grando series printer, you can maximize production while controlling quality and minimizing costs for beautiful soft signage, apparel and interior decor items that will set your business apart from the competition. Wide applications in clothing, home decoration fabrics, sampling, shirt, canvas bags, bolster, scooter, flags, textile gadgets etc.



● Technical Specifications

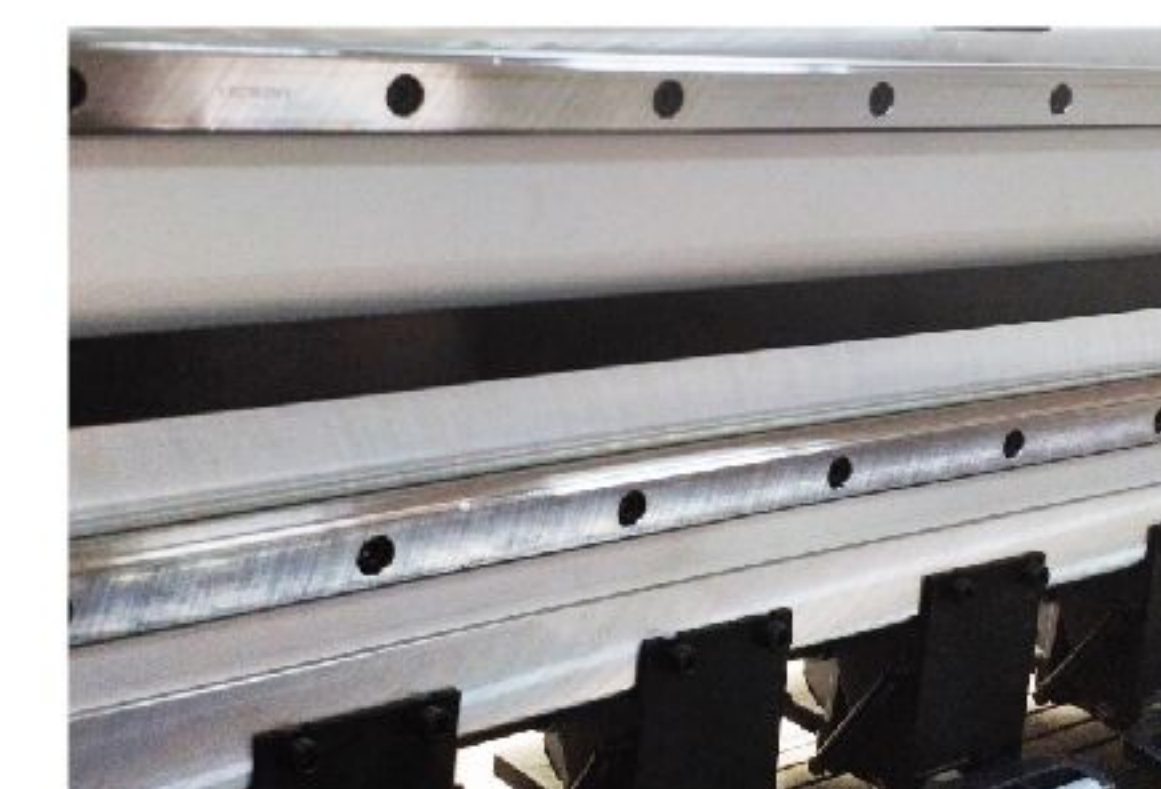
Model	CEJ1806-TX(I3200)	
Print Head	Six I3200 Print Heads	
Printing Technology	Piezoelectric Inkjet	
Acceptable Media	Width	71.6 in.(1820 mm)
	Thickness	Maximum 39 mil(1 mm)
	Weight	220 lb.(100 kg)
Printing Width	70.8 in.(1800 mm)	
Ink Cartridges	Type	Dye Sublimation Ink
	Capacity	4*4 CISS (220ml ink cartridge with 3L ink tank)
	Color	4 colors (Cyan, Magenta, Yellow, Black),8 colors optional
Printing Resolution	Maximum 3600 dpi	
Printing Speed	1pass(360x1200dpi): 240 sqm/h	
	2pass(360x2400dpi): 130 sqm/h	
	3pass(360x3600dpi): 90 sqm/h	
Media Heating System	Intergrated post heater & Infrared Dryer & Fan system	
Interface	USB 3.0	
Power Supply	AC 220V ± 10%, 50/60 HZ	
Dimensions(with stand)	126.5(W)x31.5(D)x54(H) in.	
	(3213(W)x800(D)x1370(H) mm)	
Weight(with stand)	1102.3 lb. (500 kg)	
Package Dimensions	131.8(W)x44.4(D)x71.6(H) in.	
	(3350(W)x1130(D)x1820(H) mm)	
Package Weight	1344.8 lb. (610 kg)	
Environment	Power on	Temperature: 59 ℉ to 90 ℉ [15℃ to 32℃] / Humidity: 35 to 80% (no condensation)
	Power off	Temperature: 41 ℉ to 104 ℉ [5℃ to 40℃] / Humidity: 20 to 80% (no condensation)
Accessories	USB cable, media clamp, manual, drain bottle, ink cartridges, RIP software, etc.	



Front expander



Rear media balance bar



Double high-precision mute rail.



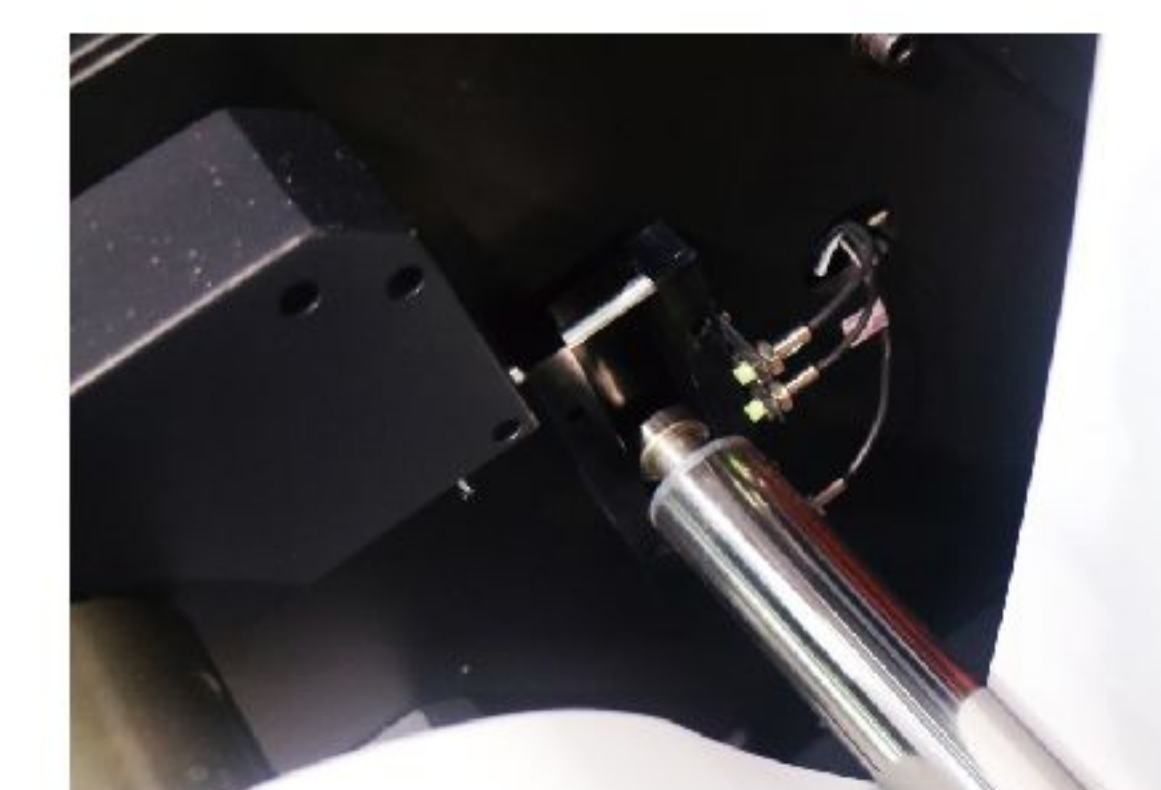
Stable 3L bulk system ensures amazing printing speed.



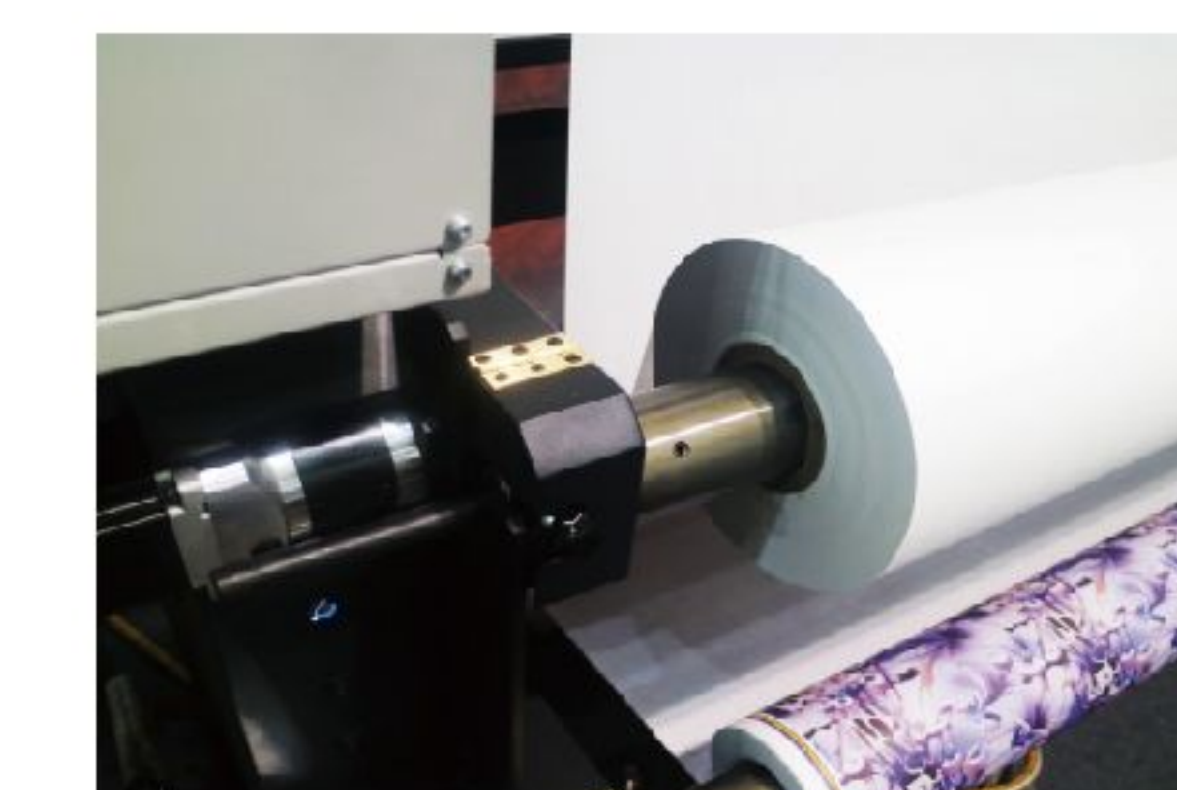
Inflatable take up and feed media shaft.



Integrated IR & cooling fan system.



Media retraction tension bar.



Junbo media roll maximum 1000m media load.