

CEJ-2212TX

Industrial High Speed Dye Sublimation Printer



Grando Sublimation Ink

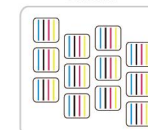


* 2.2m Twelve I3200 Print Heads Speed

240x1800dpi - 1pass 520 m²/h

480x1800dpi - 2pass 320 m²/h

Twelve I3200 Heads
CMYK



Both the sublimation and direct-to-textile printers are examples of our expertise and engineering: top performance, reliable and precise. With Grando series printer, you can maximize production while controlling quality and minimizing costs for beautiful soft signage, apparel and interior decor items that will set your business apart from the competition. Wide applications in clothing, home decoration fabrics, sampling, shirt, canvas bags, bolster, scooter, flags, textile gadgets etc.

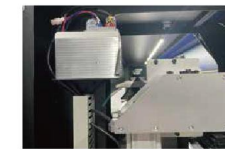


● Technical Specifications

Model	CEJ-2212TX	
Print Head	Twelve I3200-A1 Print Heads	
Droplet Size	3.5pl	
Printing Width	86.39 in.(2200 mm)	
Printing Speed	1pass(240x1800dpi): 5597 sqft (520 sqm/h) 2pass(480x1800dpi): 3444 sqft (320 sqm/h)	
Ink Cartridges	Type	Dye Sublimation Ink
	Supply	Siphon + Automatic Ink Replenishment
	Color	CMYK (6colors or 8colors Optional)
Print Media	Heat Transfer Paper	
Print media control	Air Shaft Automatic Take-up	
Dryer	External Automatic Air Heat Integrated Dryer	
Moisturizing unit	Automatic Cleaning and Moisturizing Integrated Captop	
RIP Software	RIIN Beidou Textile Version	
File Format Supported	JPG / TIFF / PDF, etc	
Computer Configuration	Operating System	win7 64 bit / win10 64 bit
	Hardware Requirements	CPU: i7 Processor (9th generation or higher) Hard Disk 500g+ (solid state disk) Operating Memory 16g, Graphics Card: ATI display 4G memory, Motherboard: ASUS, Gigabyte
	Data transmission	USB3.0
Power requirement	Input Voltage	AC 220 V ± 5%, 16A, 50 HZ± 1
	Printer Drying unit power	2500W Maximum 8kw
Dimensions(with stand)	144(W)x37(D)x72(H) in. (3670(W)x950(D)x1850(H) mm	
Package Dimensions	149(W)x30(D)x69(H) in. (3800(W)x760(D)x1750(H) mm	
Working Environment	Temperature 15-32 degrees C, Humidity: relative humidity: 40-70 (non condensing)	
Standard Components	External Automatic Air Heat Integrated Dryer, Low Ink Alarm System, Air Shaft Media Loading and Take-up, and Automatic Moisturizing and Cleaning Init	



3-foot pinch rollers greatly improve the stability of feeding accuracy



200W DC servo motor has good stability and long service life



The air shaft take-up with rubber strip ensures stable media movement



Infrared distance sensor



Lack-of-media sensor



Vertical air guiding platform makes the paper surface flat



Up-down tension control



2 external infrared drying units