

CEJ-2015TX

Industrial Dye Sublimation Printer (With 15 Heads)



Grando Sublimation Ink

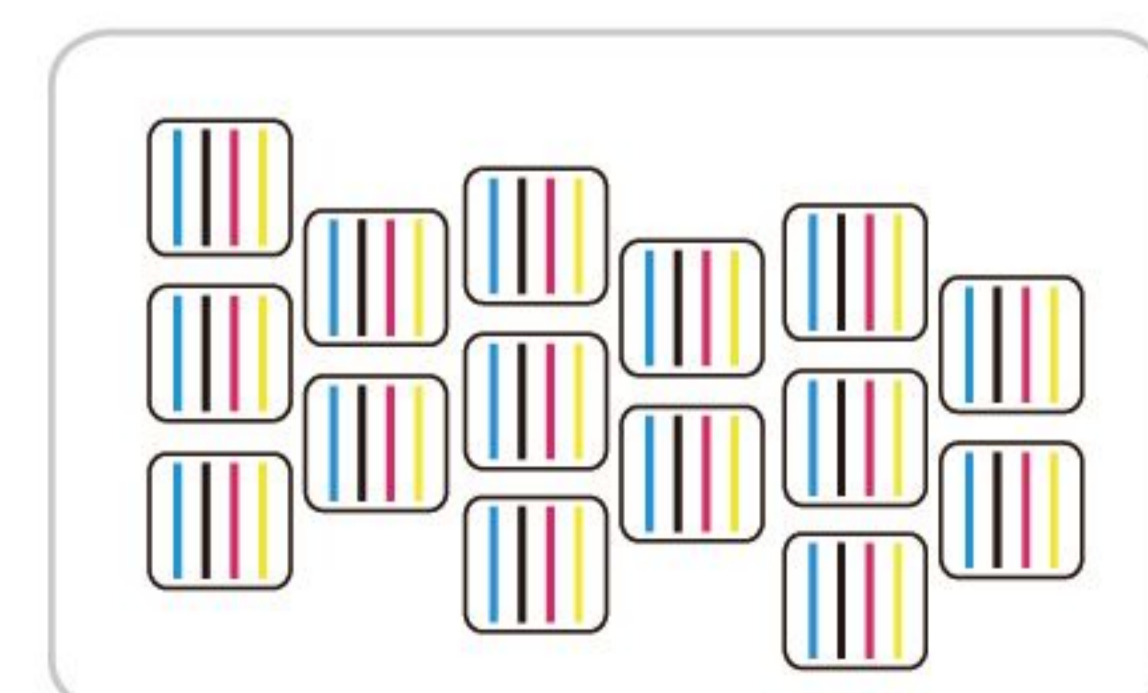


* 2m Fifteen I3200 Print Heads Speed

240x1800dpi - 1pass 520 m²/h

480x1800dpi - 2pass 260 m²/h

Fifteen I3200 Heads
CMYK



Both the sublimation and direct-to-textile printers are examples of our expertise and engineering: top performance, reliable and precise. With Grando series printer, you can maximize production while controlling quality and minimizing costs for beautiful soft signage, apparel and interior decor items that will set your business apart from the competition. Wide applications in clothing, home decoration fabrics, sampling, shirt, canvas bags, bolster, scooter, flags, textile gadgets etc.



● Technical Specifications

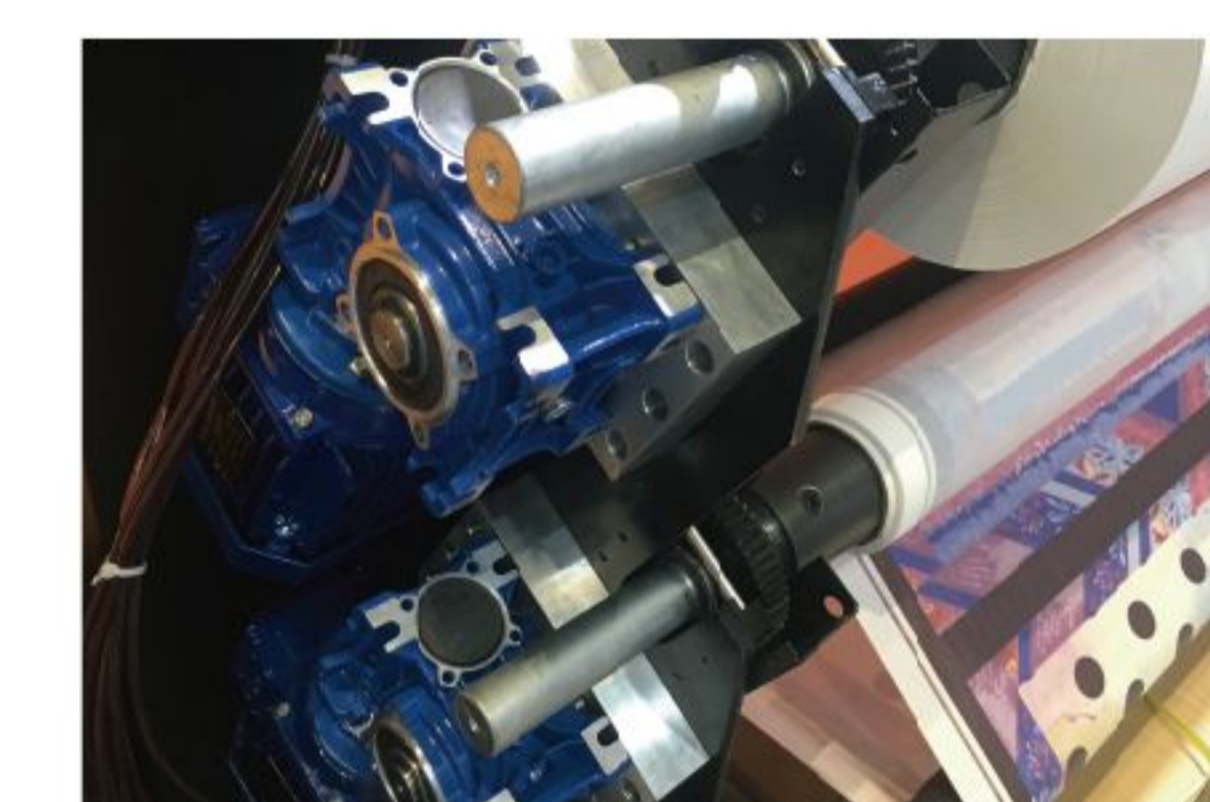
Model	CEJ-2015TX	
Print Head	Fifteen I3200-A1 Print Heads	
Droplet Size	3.5pl	
Printing Speed	1pass(240x1800dpi): 5591 sqft (520 sqm/h) 2pass(480x1800dpi): 2796 sqft (260 sqm/h)	
Ink Cartridges	Type	Dye Sublimation Ink
	Supply	Siphon
	Color	CMYK/ CMYK,LC,LM
Print Media	Heat Transfer Paper	
Printing Width	76.7 in.(1950 mm)	
Media Loading and Take-up	Automatic Air Expansion Shaft System	
Dryer	External Automatic Air/ Heat Integrated Dryer	
Moisturizing	Automatic Cleaning and Moisturizing Integrated Unit	
RIP Software	Maintop6.0、Photoprint、Onyx、NeoStampa、PrintFactory (Ultraprint as standard and other softwares optional)	
File Format Supported	JPG / TIFF / PDF, etc	
Computer Configuration	Operating System	win7 64 bit / win10 64 bit
	Hardware Requirements	CPU: i7 Processor (9 or After); Hard Disk >500G(Solid State Hard Disk); Running Memory 16G; Monitor ATI 4G Memory; Branded Mainboard (ASUS, Gigabyte)
	Transmission Interface	USB3.0
Power requirement	Input Voltage	AC 220 V ± 5%, 16A, 50 HZ± 1
	Printer	1500W
	Dryer	Maximum power 13KW
Dimensions(with stand)	154(W)x49(D)x73(H) in. (3900(W)x1250(D)x1850(H) mm	
Package Dimensions	157(W)x43(D)x77(H) in. (4000(W)x1100(D)x1950(H) mm	
Working Environment	Temperature 15-32 degrees C, Humidity: relative humidity: 40-70 (non condensing)	
Standard Components	External Automatic air/Heat integrated dryer, ink level alarm system, double air expansion shaft media loading and take-up system, automatic moisturizing and cleaning system	



Double high-precision mute rails



220ml secondary ink cartridge+ 5L bulk ink system ensures amazing printing speed



Variable frequency motor



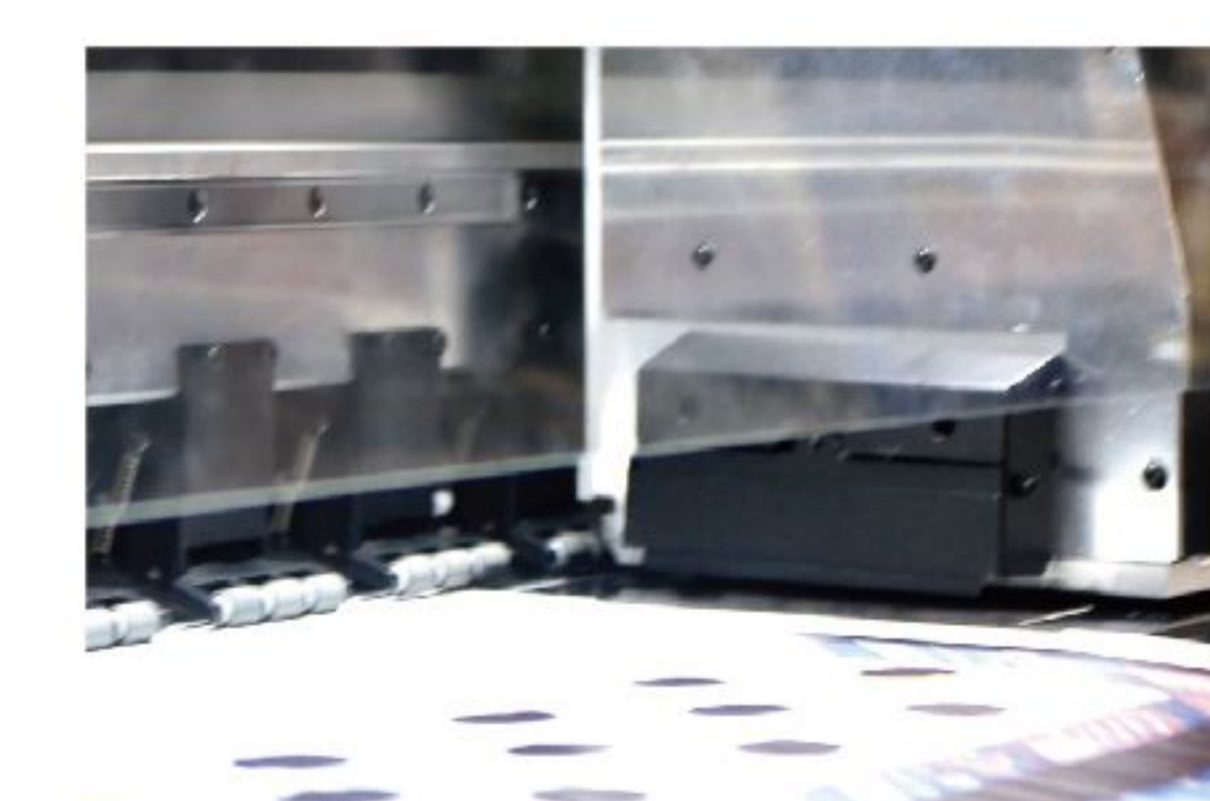
High quality DC servo motor, good stability and long service life



Front + bottom infrared drying system



The air shaft media system supports 10,000m media roll



The anti-collision device protects print heads while working



Captop and integrated wiper to moisturize heads, make it convenient for operation and maintenance