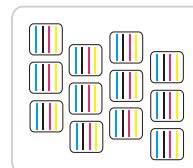


# CEJ-2012TX Pro

High Speed Digital Industrial Printer (With 12 Heads)



12pcs I3200-A1 Heads CMYK



\* 2.0m 12pcs I3200-A1 Print Heads Speed

760x700dpi - 1pass 530 m<sup>2</sup>/h

760x1200dpi - 2pass 280 m<sup>2</sup>/h

Grando Sublimation Ink



## Technical Characteristics

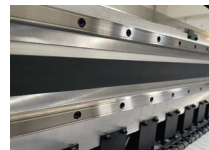
- Media loading and take-up system supports 1000m sublimation transfer paper; 10,000m optional
- Negative pressure ink supply system ensures more stable ink supply for long time printing
- The servo motor is used for collecting and discharging materials, and the vertical channel air guiding platform is used, High quality AC servo motor, good stability, long service life. Vertical groove guide gas platform, make paper surface more smooth
- The retracting and retracting system adopts swing rod tension structure, and is equipped with AC servo motor and non-contact sensor to provide stable retracting and retracting effect



Wide applications in clothing, home decoration fabrics, sampling, shirt, canvas bags, bolster, scooter, flags, textile gadgets etc.

## Technical Specifications

<b>Model</b>	<b>CEJ-2012TX Pro</b>	
Print Head	12pcs I3200 Print Heads	
Droplet Size	3.5pl	
Printing Technology	Piezoelectric Inkjet	
Acceptable Media	Width	2000(mm)
	Thickness	≥30g
	Outer Diameter	210 mm(8.3in)
	Bearing Meter	3000m
Ink Cartridges	Type	220ml secondary ink tank + 5L ink bottle
	Color	CMYK / CMYK+S1S2S3S4
	Supply	Siphon ink path system + automatic refill ink system
Print Media	Heat Transfer Paper	
Printing Resolution	Maximum 1200 dpi	
Printing Speed	1pass(720x600dpi): 5704sqft (530 sqm/h)	
	2pass(720x1200dpi): 3013sqft (280 sqm/h)	
Media Loading and Take-up	Automatic Air Expansion Shaft System	
Dryer	External Automatic Air/ Heat Integrated Dryer	
Moisturizing	Automatic Cleaning and Moisturizing Integrated Unit	
RIP Software	Maintop6.0, Photoprint, Onyx, NeoStampa, PrintFactory (Ultraprint as standard and other softwares optional)	
File Format Supported	JPG / TIFF / PDF, etc	
Interface	USB 3.0	
Power	printing system : 2000W	Drying system : Maximum 10000W
Power Supply	AC 220V ± 5%, 16A, 50HZ±1	
Size	3531(L) x 1646(W) x 1962(H)mm	
Packing Size	3700(L) x 1150(W) x 2000(H) mm	
Weight	G.W.1250kg N.W.1050kg	
Environment	Power on	Temperature: 59 ℉ to 90 ℉ [15 C to 32 C] / Humidity: 35 to 80% (No Condensation)
	Power off	Temperature: 41 ℉ to 104 ℉ [5 C to 40 C] / Humidity: 20 to 80% (No Condensation)
Accessories	External Automatic Control Air And Heat Integrated Dryer, Low-ink Alarm System, Double air-shaft Media Loading And ta-up System, Automatic Moisturizing Cleaning System	



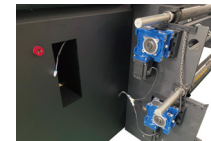
THK double guide rail is equipped with professional tooth-shaped belt transmission to provide silent and stable high-speed operation effect



The drying adopts a heat-insulating plate, which effectively reduces the energy consumption of drying and provides efficient drying effect



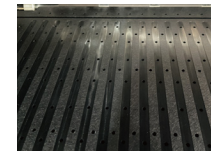
Motor uses AC servo motor to make the trolley movement smoother and the printing point more accurate



Feeding adopt servo motor, make the paper more stable and more accurate



Swinging rod type feeding tension system



Vertical groove guide gas platform, make paper surface more smooth



The frequency converter is equipped with a high-precision angle sensor to make the receiving and unloading more smooth and stable.



External two sets of infrared drying system, precise control of drying temperature to reduce energy consumption;