

BEJ-1806

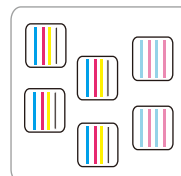
Eco Solvent Printer (with six I3200-E1 heads)



Grando Eco Solvent Ink



Six I3200-E1 Heads

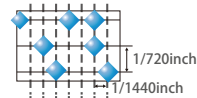
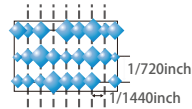
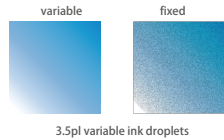
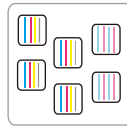


* 1.8m Six I3200-E1 Print Heads Speed

360x2400dpi - 4pass	84 m ² /h
720x1800dpi - 6pass	62 m ² /h
720x2400dpi - 8pass	47 m ² /h

High-speed micro-piezo inkjet printing technology

BEJ-1806S is equipped with six i3200 printheads, using advanced board control technology, industrial grade design to ensure the durability of the printhead, 4pass 80 m²/h

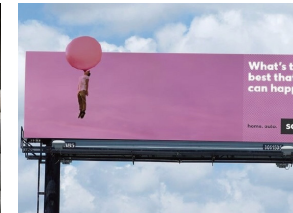
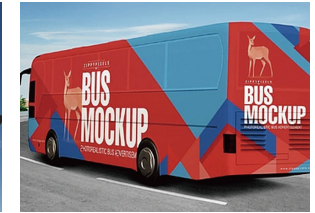


Intelligent inkjet printing technology and variable ink droplets ensure perfect print output, Meets user requirements for print quality and speed

- Choice of automatic or manual print setup
- Feed calibration can be used in the printing process
- Optional printer control from computer or printer panel

• Technical Specifications

Model		BEJ-1806
Print Head		Six i3200-E1 Print Heads
Printing Technology		Piezoelectric Inkjet
Acceptable Media	Width	72 in.(1830 mm)
	Thickness	Maximum 39.4 mil(1 mm)
	Weight	220.5 lb.(100 kg)
Printing Width		70.8 in.(1800 mm)
Ink Cartridges	Type	Eco Solvent Ink
	Capacity	4*4 CISS (220ml ink cartridge with 3L ink tank)
	Color	CMYK LC LM
Printing Resolution		Maximum 2400 dpi
Printing Speed		4pass(360x2400dpi) : 80 sqm/h
		8pass(720x2400dpi) : 45 sqm/h
Media Heating System		Three stage heating system
Interface		Ethernet
Power		Host power 2500W+maximum drying power 7200W
Power Supply		AC 220V ± 10%, 50/60 HZ
Weight(with stand)		1102 lb. (500 kg)
Package Dimensions		Entirety Packing : 143.7(W)x43.3(D)x73.2(H) in. (3650(W)x1100(D)x1860(H) mm)
		Split Packing: 133.8(W)x35.4(D)x70.9(H) in. (3400(W)x900(D)x1800(H) mm)
Environment	Power on	Temperature: 59°F to 90°F (15°C to 32°C) Humidity: 35 to 80% (no condensation)
	Power off	Temperature: 41°F to 104°F (5°C to 40°C) Humidity: 20 to 80% (no condensation)
Accessories		USB cable, media clamp, manual, drain bottle, ink cartridges, RIP software, etc.



Wide applications in light box posters, customized car stickers, background wall cloth, label printing, advertising sign, subway advertising, shopping mall advertising signs etc.



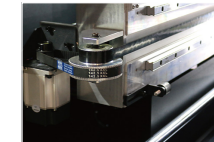
Using i3200 printing nozzle, high speed and high quality



Accurately control the platform suction wind force and the heating temperature of the front and rear covers of the platform



Super wide and super thick main beam structure THK silent dual guide rail



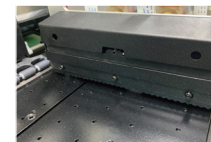
High quality DC servo motor has good stability and long service life



External power interface, improve the convenience of use



Three stage heating system including pre-heater, print heater, and rear heater and platform vacuum system with adjustable power.



Trolley board anti-collision device



Temperature and humidity meter for better monitoring of printing working environment